

The Installing Guide for the Intelligent Card Lock
Content

1. Confirming Issues before Installation 2
2. Installing Procedure (V200-RF/M1/SM series Intelligent card lock installing procedure and notice issue 2
3. Testing Issue after the Installing 4
4. FAQ 4

To ensure the installing quality of the door lock and use the products better, please be sure to peruse the below content:

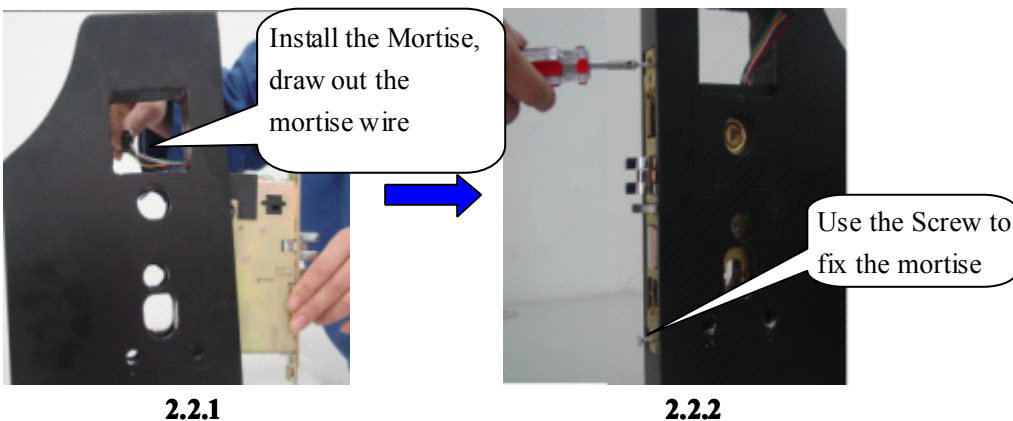
1. Confirming Issues before the Installing

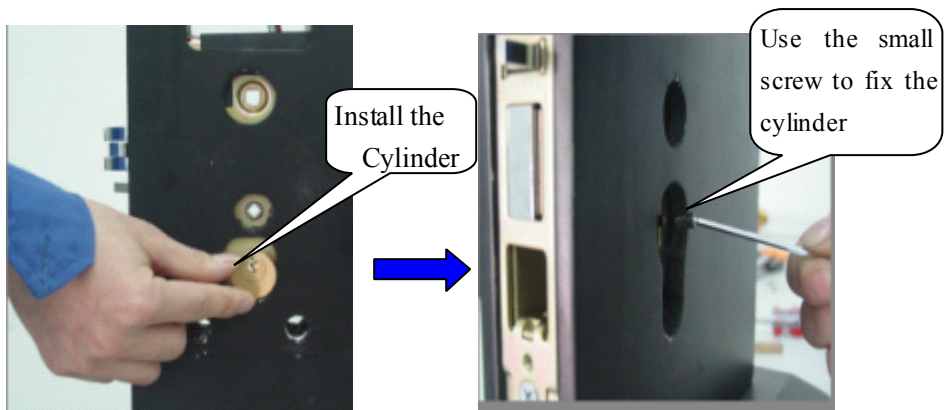
- A). The doors have already tapped the door hole for the lock to be installed. The door hole dimension refer to the door hole template and tapping instruction.
- B). Check the packing list, and inspect the spare parts are complete.
- C). Confirm the door is already painted, other necessary factors like power supply connected, dusting works finished.

2. Installing Procedure.

V200-RF/M1/SM series Intelligent Card Lock Installing Procedure and caution.

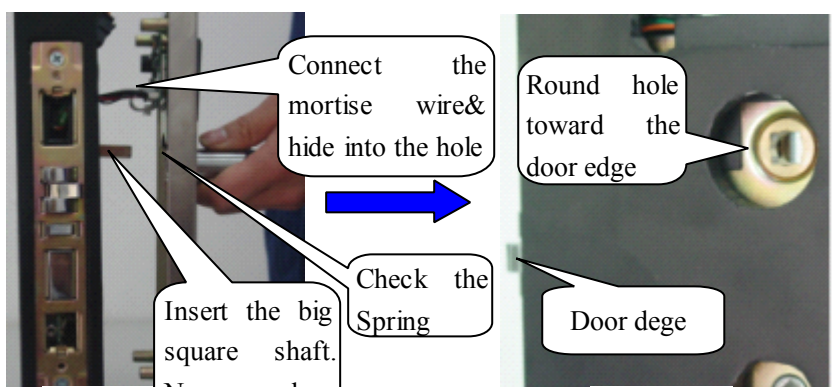
- A). Put the Mortise into the door slot, and use the ST3.3x25 screws to fix (The slope of the latch outward to the door). Caution: Draw out the Plug wire, DONOT pull apart. See Pic 2.2.1 and 2.2.2
- B). Install the cylinder to the mortise, and use the M3 concave hexagonal screw to fix. Caution: DONOT fall the screw into the mortise, in case fall into, MUST take it out to not effect the mortise running.
- C). Insert the Big Square Shaft into the shaft hold of the mortise, the big square shaft has locating shoulder, the short end put to the square slot of the mortise, DONOT reversed put. Caution: Checking the mortise shift fork round hole should toward the door edge when insert the big square shaft. See pic 2.2.5 and 2.2.6
- D). Connect the mortise wire to the PCB wire of the Front Lock body, level the square hole of the front handle at the big square shaft, front lock body panel's round hole level at the cylinder of the mortise and close it. Caution: Checking the spring in the handle hole before close the front lock body, if the spring is not in the handle hole, must put it in and DONOT press the wire. Pic 2.2.5.
- E). Input 4 piece AA batteries at the Back Lock Body, Beware that the battery can not reversed connect. Pic. 2.2.7
- F). Connect the Battery Case wire to the Power wire of the PCB, insert the small square shaft, big square shaft to the mortise (DONOT reversed insert the big square shaft), close the back lock body. Be aware of DONOT press wire. Pic 2.2.8
- G). Use 4 pieces M5 sunk screws to fix the front and back lock bodies, checking the front and back handles, square deadbolt knob is flexible. If not, need to adjust the lock body location. Pic 2.2.9
- H). Install the door frame box and strike plate. Be ware to the depth of the strike plate's top and bottom is horizon to the door frame, door frame box proper to the frame slot, fix the screws after finish the adjust. After installing, check the closing mobility of the door, 2mm is the best condition.
- I). Use the Card key, mechanical key to check if the functions of the lock is properly working, when all settings are properly, install the mortise plate and the cylinder cover. Pic. 2.2.10





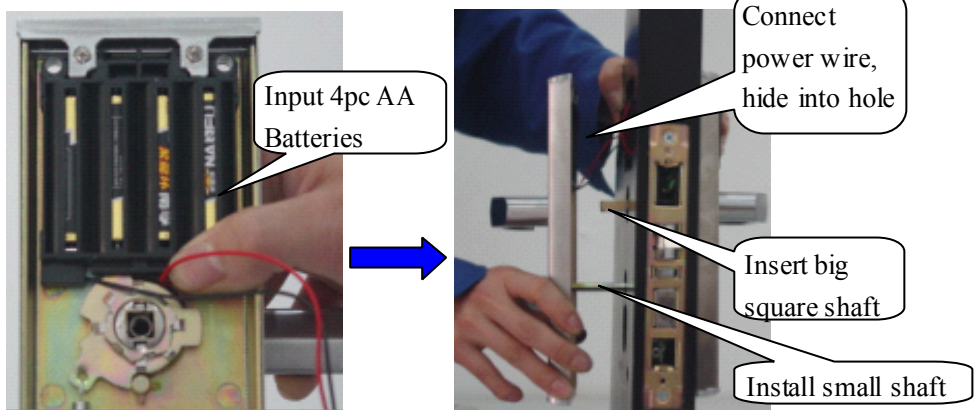
2.2.3

2.2.4



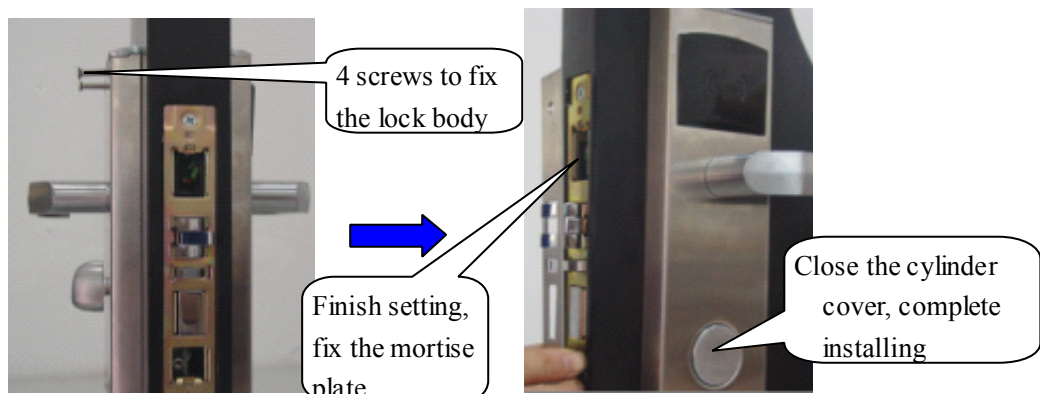
2.2.5

2.2.6



2.2.7

2.2.8



2.2.9

2.2.10

3. After Install testing issues

After installing the door lock, checking the out-looking of the whole lock to see if the lock body is install properly, the screws is fix firmly, and then take the test as follows to ensure the installation quality.

(Caution: After installing, before use the card to open, the lock is in passage condition, that is both inside and outside can open directly).

- A). Outside the door, use the handle to open, to feel the handle is torsion, and the handle is back-set properly, if it is torsion force, handle can not back-set properly, need to adjust: see the lock body is slanting, or adjust the fixing screws of the lock body.(repeat 10 times for press the handle)
- B). Outside the door, turn out the deadbolt, use the handle to open, if feel torsion force, and the handle is back-set not properly, check if the lock body is installed slanting, or adjust the fixing screws of the lock body.(repeat 10 times for press the handle)
- C). Inside the door, use the handle to open, to feel the handle is torsion, and the handle is back-set properly, if it is torsion force, handle can not back-set properly, need to adjust: see the lock body is slanting, or adjust the fixing screws of the lock body.(repeat 10 times for press the handle)
- D). Inside the door, turn out the deadbolt, use the handle to open, if feel torsion force, and the handle is back-set not properly, check if the lock body is installed slanting, or adjust the fixing screws of the lock body. (repeat 10 times for press the handle)
- E). Use the mechanical key to open (including turn out the deadbolt). Repeat 10 times.
- F). Press the latch to see if alarm; press and loose the safety latch to see if back-set properly.
- G). Confirm the room number, and mechanical key stick the number label.
- H). Final check the if the cylinder cover and mortise plate is install well.

FAQ and troubles shoot.

- 1). Door lock in passage condition, use the opening card key to open to set back to normal condition.
- 2). After installing the lock, press the handle, the latch retract, but can not stretch smoothly, the causes is:
 - A). When tapping the door hole, did not tapping wider on the latch side, the latch jammed; Solution: to tap wider on the latch side of the door.
 - B). Both Front and Back Lock body were not installed properly, the big square shaft was pressed by the lock Panel, the latch can not stretch smoothly. Solution: to install the lock bodies again.
 - C). The mortise plate did not install properly, and the plate prop the latch. Solution: install the mortise plate one more time.
- 3). If the lock light turn on Red, and once in a while prompt the beep of DI...DI...DI...3 continuous beeps, it is the latch of the mortise can not stretch out completely. Solution:
 - A). Adjust the mortise plate, level to the latch, deadbolt to let the latch can retract and stretch flexible.
 - B). Check and see if the the mortise did not install properly, and prop the latch.
- 4). The valid card can not open the door, and the door light did not turn on. Causes are:
 - A). Batteries gone out.
 - B). Power wires were stamped.
 - C). The IC card reader stuffs other thing and cause the card can not read, the door lock does not response. Solutions: To use other spare parts (mortise or PCB) to test, after check out the reason, change the spare part.